

# Document Scanners

## ScanSnap S300

office



**ScanSnap**  
Color Image Scanner  
**S300**



- Compact document scanner for office or mobile use
- Scan single or double sided documents at up to 16 images per minute
- Process business cards up to A4 size documents
- Be assisted by "Quick Menu" target application selection
- Optionally USB bus powered

**FUJITSU**

THE POSSIBILITIES ARE INFINITE

## Accelerated scanned data use with S300's new Microsoft® Office linkage function **NEW**

### Benefits include:



"One touch" operability

- Easy to use "Quick Menu" function.
- S300 users can easily attach scanned images to e-mail messages and use this scanner in place of a photocopier to duplicate paper documents.
- Editable PDF images can be created by scanning documents into ScanSnap Organizer. This application will initiate background text recognition processes on the document anytime the computer's CPU is idling.

Use the organiser function with your preferred document settings



Scan2Folder



Scan2E-mail



Scan2Print



Top-class OCR engine  
**ABBYY FineReader for ScanSnap™ 3.0**

## ScanSnap S300

Easily digitises various document types.  
"Total support" from digitisation through to application.



10 Sheets



150 to 600 dpi



Duplex 16 ipm



Simplex 8 ppm



Mains optional



Feed paper in

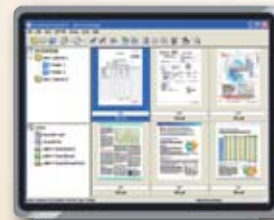


Press button to scan documents



View scanned documents and email wirelessly

## Efficiently manages digitized data



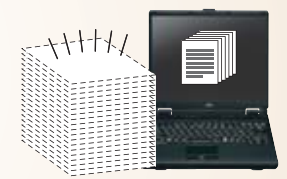
- S300 users can easily locate the ScanSnap generated PDF files that they are looking for by viewing displayed thumbnail images.
- The S300 creates searchable PDF files by performing OCR functions when the linked computer is not being used. Using desktop search utilities (not included) or Windows operating system provided search modules, paper documents now become electronically retrievable almost instantly.

PDF management & searchability software  
**ScanSnap Organizer**

## Simple one button approach and Compact!

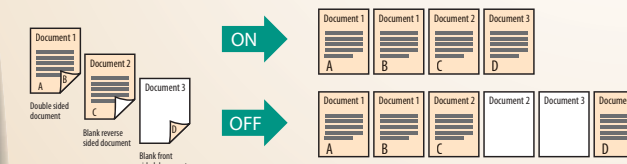
### Digitises large volumes of office documents

The S300 enables users to easily reduce paper storage space, locate important documents and create data that can be used for multiple applications by storing scanned data in a computer. It allows you to carry along your paper documents electronically stored in your notebook, rather than physically by the pile.



Shows images as they are meant to be seen. The S300 automatically eliminates blank pages while deskewing and showing images in their proper orientation.

### Blank page detection



### A S300 sitting next to a notebook



### Auto deskew and auto orientation



## Scans everything from business cards to A4 sized documents

### Auto-size detection

Users can simultaneously scan multi-page documents containing paper of different sizes.

### A4



### Irregularly shaped documents



### Business cards



### Receipts



## Efficiently organizes business card information

- Scans large volumes of business cards into digital business card holders.
- Enables users to enter scanned business card data into Excel, Outlook, Outlook Express and other databases for future reference.

Business card scanning software  
**CardMinder™**



# ScanSnap S300 Specifications



ENERGY STAR® compliant

"Adobe", "Acrobat" and the Adobe PDF logo are either registered trademarks or trademarks of Adobe Systems Incorporated in the United States and/or other countries.

<b>Product name</b>	<b>ScanSnap S300</b>		
<b>Scanner type</b>	ADF (automatic document feeder), colour duplex scanner		
<b>Imaging sensor type</b>	CIS (Colour Image Sensor) X 2		
<b>File formats</b>	PDF (as standard), High Compression PDF, JPEG		
<b>Document Formats</b>	A4, B5, A5, B6, A6, business cards. US Letter, US Legal		
<b>Light source</b>	3 colour LED (Red / Green / Blue)		
<b>Paper weight (thickness)</b>	64 to 105 g/m <sup>2</sup>		
<b>Scanning speed (A4 portrait)</b>			
<b>Scanning Speed</b> <sup>1</sup> (A4 portrait / AC adapter)	Normal Mode	Colour 150 dpi, B&W 300 dpi: 8 pages per minute / 16 images per minute	
	Better Mode	Colour 200 dpi, B&W 400 dpi: 6 pages per minute / 12 images per minute	
	Best Mode	Colour 300 dpi, B&W 600 dpi: 4 pages per minute / 8 images per minute	
	Excellent Mode	Colour 600 dpi, B&W 1,200 dpi: 0.5 pages per minute / 1 image per minute	
<b>Scanning Speed</b> <sup>2</sup> (A4 portrait / USB bus power)	Normal Mode	Colour 150 dpi, B&W 300 dpi: 4 pages per minute / 8 images per minute	
	Better Mode	Colour 200 dpi, B&W 400 dpi: 3 pages per minute / 6 images per minute	
	Best Mode	Colour 300 dpi, B&W 600 dpi: 2 pages per minute / 4 images per minute	
	Excellent Mode	Colour 600 dpi, B&W 1,200 dpi: 0.5 pages per minute / 1 image per minute	
<b>Paper chute capacity</b>	10 sheets ADF (A4, 80 g/m <sup>2</sup> )		
<b>Optical resolution</b>	600 dpi x 600 dpi		
<b>Output format</b>	Colour 24 bit (RGB 8 bit / Pixel each); b/w (1 bit / Pixel)		
<b>Interface</b>	USB 2.0 (compatible with USB 1.1)		
<b>Power consumption</b>	Operating: ≤9 W, Standby: ≤5 W		
<b>Power requirements</b>	AC Adapter: AC 100 to 240 VAC ±10%, 50/60 Hz / USB Bus Power: 5V / 1A (0.5A X 2 Port)		
<b>Operational environment</b>	Temperature 5°C - 35°C / Relative humidity 20% - 80% (non-condensing)		
<b>Dimensions (W x D x H)</b>	284 x 95 x 77 mm		
<b>Weight</b>	1.4 kg without power adapter		
<b>Bundled software</b>	ScanSnap Manager <sup>®</sup> , ScanSnap Organizer, CardMinder		
<b>Environmental compatibility</b>	ENERGY STAR <sup>®</sup> and RoHS		
<b>Supported operating systems</b>	Windows <sup>®</sup> 2000 Professional, XP, Windows <sup>®</sup> Vista <sup>™</sup>		

<sup>1</sup> Scanning speeds may vary due to the system environment used. <sup>2</sup> Requires simultaneous connection to two active powered USB ports on computer.

<sup>3</sup> ScanSnap Manager is a unique driver that can serve any application capable of opening PDF or JPEG file formats. This solution purposely does not support TWAIN or ISIS protocols in order to empower easy and convenient every day use. (TWAIN and ISIS<sup>™</sup> are not supported by ScanSnap).

System requirements		Windows <sup>®</sup> 2000 Professional	Windows <sup>®</sup> XP	Windows <sup>®</sup> Vista <sup>™</sup>	
<b>Compatible Operating System</b>	ScanSnap Manager V4.2	Supported	Supported <sup>1</sup>	Supported	
	ScanSnap Organizer V3.2	Supported	Supported <sup>1</sup>	Supported	
	CardMinder <sup>™</sup> V3.2	Supported	Supported <sup>1</sup>	Supported	
<b>Hardware Requirements</b>	CPU	Intel <sup>®</sup> Pentium <sup>®</sup> III processor 1.2 GHz or higher (Intel <sup>®</sup> Celeron <sup>®</sup> M 430 1.73 GHz or higher is recommended)		Intel <sup>®</sup> Pentium <sup>®</sup> 4 1.8 GHz or higher (Intel <sup>®</sup> Celeron <sup>®</sup> M 430 1.73 GHz or higher is recommended)	
	Memory Capacity	512 MB or higher (1 GB or higher is recommended)		1 GB or higher (1 GB or higher is recommended)	
	Disk Capacity	Spare capacity of a least 920 MB is necessary to install the software that is included in this table.			
	CD-ROM Drive	Required for installation			
	USB Port	USB 2.0 / USB 1.1			

<sup>1</sup> Compatible with Windows<sup>®</sup> 2000 Professional and Windows<sup>®</sup> XP Professional / Home Edition (Service Pack 1 or higher). Operates most effectively with Windows Vista<sup>™</sup> compatible versions of Adobe Acrobat. Use with non-Windows Vista<sup>™</sup> compatible versions of Adobe Acrobat might result in the generation of PDF files that cannot be searched. Memory capacity of 1GB or higher is recommended when scanning in "Excellent mode". Scanning speeds may drop if recommended CPU, memory capacity and USB 2.0 requirements are not met.

Consumables and Options	Part number	Remarks
<b>ScanSnap S300 Consumable Kit</b>	CON-3541-010A	Lifetime: Up to 100,000 Documents or 1 year; contents: 1 x Pick Roller, 2 x Separation Pad
<b>Desktop Scanner Cleaning Kit</b>	SC-CLE-KIT1	Includes F1 pump spray cleaner fluid, cleaning sheets with adhesive surface and cleaning paper

All names, manufacturer names, brand and product designations are subject to special trademark rights and are manufacturer's trademarks and/or registered brands of their respective owners. All indications are non-binding. Technical data is subject to change without prior notification.

#### Fujitsu Europe Limited

Hayes Park Central  
Hayes End Road, Hayes  
Middlesex UB4 8FE  
England  
Tel: (+44-(0)20) 8573 4444  
Fax: (+44-(0)20) 8573 2643

#### Fujitsu Deutschland GmbH

Frankfurter Ring 211  
80807 Munich  
Germany  
Tel: (+49-(0)89) 32378-0  
Fax: (+49-(0)89) 32378-100

#### Fujitsu Italia S.p.A.

Via Nazario Sauro, 38  
20099 Sesto San Giovanni (MI)  
Italy  
Tel: (+39) 0226294.1  
Fax: (+39) 0226294.201

<http://emea.fujitsu.com/scanners>

THE POSSIBILITIES ARE INFINITE